

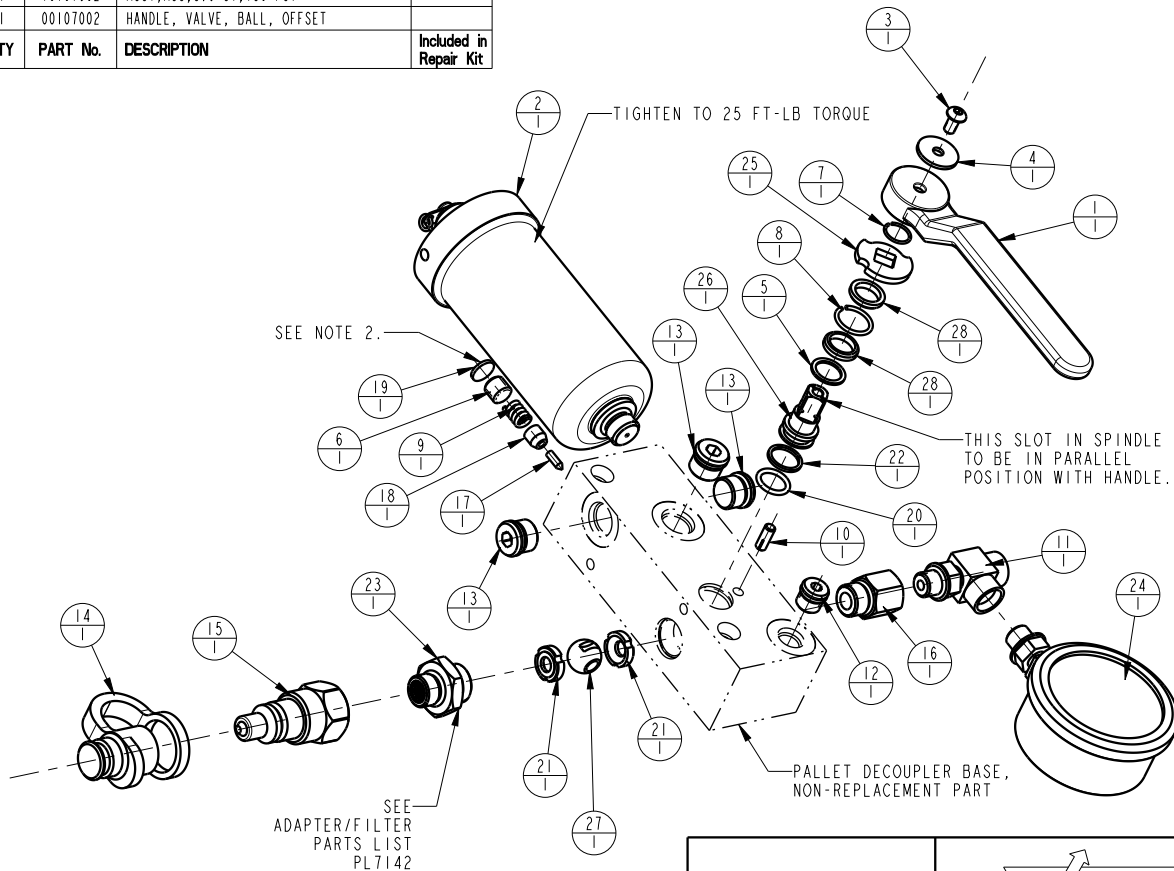
1

2

| | | | | |
|-----|-----|----------|-------------------------------------|------------------------|
| N/A | N/A | 62560000 | KIT, REPAIR, PALLET DECOUPLER | |
| 28 | 2 | 87010193 | SPACER, SPINDLE, STEEL, VALVE, BALL | * |
| 27 | 1 | 87010192 | BALL, CONTROL, DIRECTIONAL | * |
| 26 | 1 | 87010191 | SPINDLE, CONTROL, VALVE, BALL | * |
| 25 | 1 | 87010190 | WASHER, LIMIT, VALVE, BALL | |
| 24 | 1 | 72212152 | GAUGE, PRESS, HYDR, 5000 PSI | |
| 23 | 1 | 70040772 | ASSY, ADAPTER/FILTER, PD, 25 MICRON | |
| 22 | 1 | 39010042 | BU RING, (-014) | * |
| 21 | 2 | 39010040 | SEAL, VALVE, BALL | * |
| 20 | 1 | 39000037 | O-RING, (-906) | * |
| 19 | 1 | 35349089 | PLUG, EXPANSION, 7/16 | * |
| 18 | 1 | 35349057 | RELEASE GUIDE | |
| 17 | 1 | 35349056 | ROD, RELEASE | * |
| 16 | 1 | 30801264 | REDUCER, MALE SAE 6 - FEM SAE 4 | |
| 15 | 1 | 30772766 | COUPLING, OD, SAE 6, MALE | |
| 14 | 1 | 30719706 | COVER, DUST, OD, SAE 6 | |
| 13 | 3 | 30601166 | PLUG, SOCH, SAE 6 | |
| 12 | 1 | 30601144 | PLUG, SOCH, SAE 4 | |
| 11 | 1 | 30231244 | TEE, RUN, SAE 4 FEM - SAE 4 MALE | |
| 10 | 1 | 23521018 | PIN, GROOVE, TYPE H, 3/16, 1/2 LONG | |
| 9 | 1 | 23350057 | SPRING, COMPRESSION | |
| 8 | 1 | 23012008 | RETAINING RING, ROUND, INTL | * |
| 7 | 1 | 23002011 | RETAINING RING, ROUND, EXT | * |
| 6 | 1 | 21440015 | SHSS, OVAL POINT | |
| 5 | 1 | 21430017 | WASHER | * |
| 4 | 1 | 21430000 | WASHER | |
| 3 | 1 | 21410004 | BHCS, 10-32 x 3/8, ALY | |
| 2 | 1 | 10101602 | ASSY, ACC, 3.6 CI, 750 PSI | |
| 1 | 1 | 00107002 | HANDLE, VALVE, BALL, OFFSET | |
| No. | QTY | PART No. | DESCRIPTION | Included in Repair Kit |

NOTE:

1. APPLY LUBRICANT TO ALL SEALS PRIOR TO INSTALLATION. DO NOT USE SILICON TYPE LUBRICANTS.
2. SET THE OVER-PRESSURE RELIEF VALVE AT 6,000 PSIG AND THEN INSTALL THE EXPANSION PLUG.



PARTS LIST



VEKTEK, INC.
1334 E. SIXTH AVE. P.O. BOX 625
EMPORIA, KS. 66801 U.S.A.

| | | | | |
|-------------------|--|----------------|------------|----------|
| P | 5822 | RELEASE | JDW | 10/05/25 |
| REV | IN ACCORDANCE WITH ECN | EFFECTIVE DATE | REVISED BY | DATE |
| DRW BY: VANDALSEM | DRAWING STATUS: Released | | | |
| DATE: 11-19-90 | PRODUCTION APPROVED FOR RELEASED STATUS ONLY | | | |

ASSEMBLIES AFFECTED

56-0002-02
C5-6000-46

PARTS LIST, ASSY, PD, HORZ, 750 PSI

SIZE
A PL5604

REV
P

SHEET 1 OF 1

1

2

FORM FEG035_PL.A.SIZE, REV. B